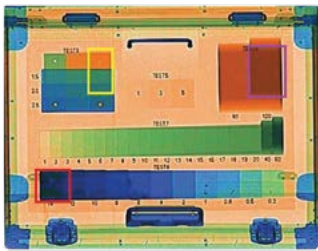


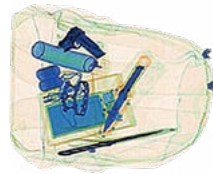
B2scan 100100DB

X-ray inspection machine B2scan 100100DB it is an advanced dual-energy X-ray inspection system for hand luggage, baggage and cargo. Being equipped with two X-ray generators it provides the display of the inspected object in two projections. With tunnel dimensions of 1010 mm x 1010 mm (W x H) it is ideal for screening hand luggage, baggage and cargo at airports, railway stations, customs posts, ports, etc. Conveyor top position makes it an ideal model for integration into baggage and cargo handling systems (BHS) at transport infrastructure facilities.

Along with unmatched ergonomics, reliability and safety, X-ray inspection machines **B2scan 100100DB** provide excellent image quality and improved material classification.



Automatic detection of explosives / drugs and alerts



Improved classification of materials: orange – organic, blue – metals, green – mixed materials

Technological features

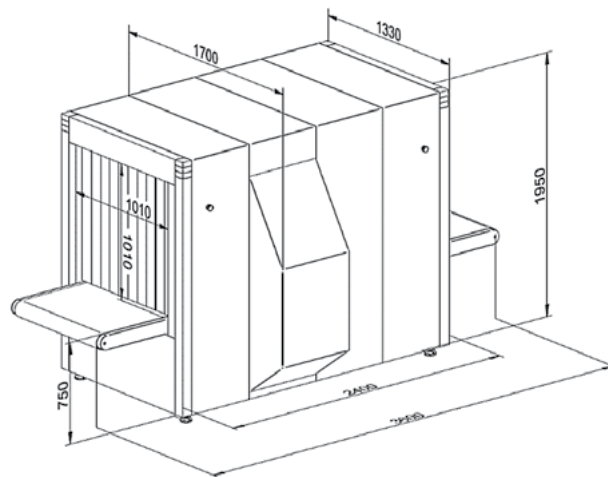
- High image quality with 38 AWG wire resolution and 34 mm steel penetration
- The X-ray dose rate around the equipment is close to the natural background level, which corresponds to all applicable international health standards and occupational safety
- Automatic detection of explosives / drugs
- TIP (projection of the image of dangerous objects) is a very effective way to train operators and control their work
- Functional stepwise, continuous and local scaling provides convenient and quick magnification of the received image
- Received images can be saved in common formats (BMP, JPG, PNG) and transfer to an external USB drive
- The ergonomic design of the keyboard and user interface ensures effective and professional work of X-ray television system
- The modular design, combined with built-in diagnostics, ensures efficient maintenance of the equipment
- Data transmission over a local network using TCP / IP protocols
- Information exchange with the system of technical monitoring results collection and control using a unified data transfer protocol and XML-based metadata.

The equipment has passed compulsory and voluntary certification applicable on the Russian Federation territory. Technical parameters and complete set of goods are subject to change without notice.



www.b2scan.ru

+7 (495) 181 7757 | info@b2scan.ru |



Equipment drawing

| General specifications | | Operating characteristics | |
|------------------------------------|--|----------------------------------|--|
| Tunnel dimensions | 1010 mm (W) x 1010 mm (H) | Wire resolution | 38 AWG / 0,10 mm |
| Conveyor speed | 0,2 m/s | Steel penetration | 34 mm |
| Conveyor height | 750 mm | X-ray dose during the inspection | less than 3,5mk3v |
| Maximum load capacity | 200 kg with an even distribution | Monitor | Two monitors, LCD, 21.5 inches, high resolution 1920x1080 |
| Anode voltage | 160 kV | | |
| Image processing system | | Health and safety | |
| Image processing functions | Color / BW image, organic / inorganic removal, change in absorption level, super-enhancement, negative image, high / low penetration, pseudocolor, etc. | X-ray dose rate | Less than 1m3v/h (5 cm from the body) meets all applicable international standards |
| Material classification (by color) | Organic: orange, inorganic: blue, mixtures and light metals: green | Safety for photographic films | Guaranteed for highly sensitive film up to ASA/ISO 1600 (33 DIN) |
| Scaling | Selectable image scaling areas, magnification 1 ~ 64 times | Installation data | |
| Image return | Viewing previous images | Dimensions / weight | 3600 mm (L) x 1700 mm (W) x 1950 mm (H) / 1200 kg |
| Memory capacity | Up to 100 000 images | Storage temperature | -40 °C~+60 °C |
| Additional functions | Date / time display, baggage counter, transaction log, user management, X-ray television system / X-ray generator operating time counters, power-on self-test, built-in diagnostics tools, bi-directional scanning, image recognition training | Operating temperature range | 0 °C~+40 °C |
| | | Humidity | 5%~95% non-condensing |
| | | Power supplies | AC power 220V (15%~+10%) 50 Hz / 60 Hz ± 3 Hz |
| | | Power consumption | 1,5 kVA |